

# MODELS LMF-12, TP-16 & TP-18

## 12,000, 16,000 OR 18,000 LB. CLEAR FLOOR 2 POST LIFT

### THE LIFT YOU CAN'T WEAR OUT



TP-16 SHOWN WITH  
OPTIONAL 3 STAGE  
SWING ARMS

**25**  
YEAR  
WARRANTY



TO MEET THE ONE AND ONLY  
NATIONAL SAFETY STANDARD  
FOR VEHICLE LIFTS



# MOHAWK

*Americas Best Lift Investment...*

Still proudly designed, welded  
and manufactured in the U.S.A.



Bid Term: 11/16/18 - 11/15/20

NJ State Approved Co-op #65MCESCCPS



# LMF-12, TP-16 & TP-18

**SOLID, SAFE, PROVEN & CERTIFIED  
HEAVY DUTY LIFTS FOR...  
HEAVY DUTY SERVICE**



▲ Two post lifts offer **FULL unobstructed** vehicle access for all repairs, take up minimum space and leaves wheels hanging free for tire or any other necessary repairs.

## MOHAWK DESIGN

- Mohawk columns are constructed of 3/4" thick forklift masts, for a **lifetime** of trouble-free service.
- Each Mohawk carriage rolls on 8 double-sealed, self-lubricating, steel **ball bearing rollers** (NOT plastic sliders).
- Two 4" heavy duty cylinders make for safer, steadier lifting than single cylinder lifts or models with tiny cylinders.
- Easily **adjustable** overhead stainless steel hydraulic lines can be set at **any** height (or routed in floor) to accommodate all tall trucks and vans.
- **Low profile** 5" swing arms fit under most passenger cars.
- Equipped with Mohawk's 5", 7 1/2" and 10" stackable lift adaptor pads.
- 60 second lifting speed saves shops time and money.
- Available with optional lower height three stage swing arms that retract 2" (1" each side) shorter and reach 10" longer for varied fleets.



## MOHAWK PATENTED INDUSTRY LEADING SAFETY SYSTEMS

- Mohawk lifts feature **all position** mechanical safety locks in both columns, starting at the ground, to full lifting height.
- Patented, infinite position, internal hydraulic safeties backed by external pressure compensated flow controls and velocity fuse valving.
- Swing arm restraints automatically engage upon lifting and automatically disengage when the vehicle has been fully lowered.
- Lease/purchase plans available for 1-5 years.

- The best, and most inclusive warranty in the lift business; 25 years structural, 10 year mechanical, plus limited lifetime cylinder seal warranty. **Mohawk builds the best lifts, with the best warranty.**

## OPERATION

- Hydraulic fluid is pumped between the two cylinders through the overhead (or optional in-floor) stainless steel hydraulic lines. Patented hydraulic synchronization eliminates the need for restrictive height overhead covers, cables, pulleys, equalizer chains or obstructive floor plates.

**Call Mohawk now!**

**NJ State Approved Co-op #65MCESCPS**

**Bid Term: 11/16/18 - 11/15/20**

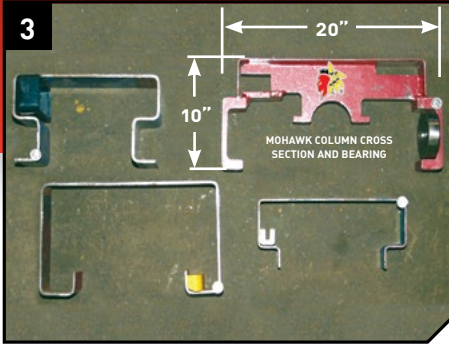
US PATENT #430071 CA



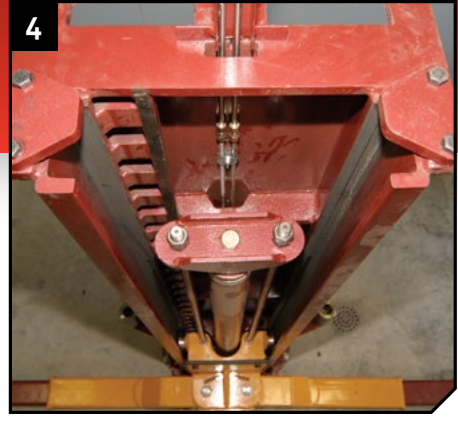
nder  
nal bay  
re, brake



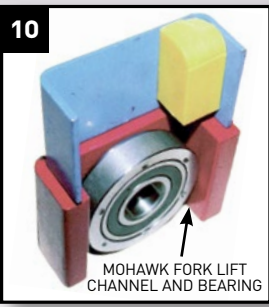
**▲ Mohawk's large and stable footprint** measures 30" wide by 24" is made of 3/4" thick plate. Mohawk's large base gives stability to the lift, while distributing the load to the shop floor.



**▲ Mohawk's fork lift channel & bearing (top right) VS. 3 different sheet metal columns** which use plastic slides. Like your fork lifts mast, **Mohawk Lifts DO NOT WEAR OUT!**

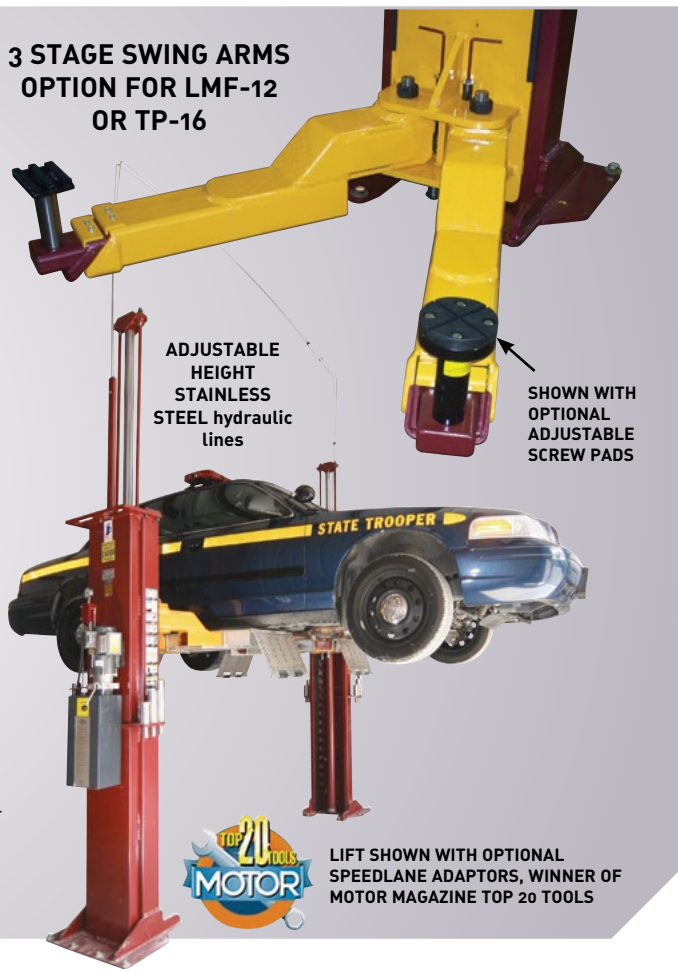


**▲ Heavy duty column construction with direct drive cylinders, direct drive lifting rods (not cables) and stainless steel hydraulic lines (not rubber hoses) which will never wear.**



**▲ FORK LIFT CHANNEL & bearing (bottom) vs. competitive columns & plastic slider (top)**

**3 STAGE SWING ARMS OPTION FOR LMF-12 OR TP-16**



ADJUSTABLE HEIGHT STAINLESS STEEL hydraulic lines

SHOWN WITH OPTIONAL ADJUSTABLE SCREW PADS

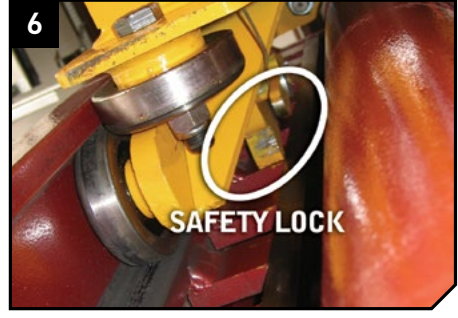
LIFT SHOWN WITH OPTIONAL SPEEDLANE ADAPTORS, WINNER OF MOTOR MAGAZINE TOP 20 TOOLS



**▲ Each carriage rolls on (8) 4" double sealed, self lubricating, heavy duty ball bearing rollers for a lifetime of trouble-free service (not plastic slide blocks).**



**▲ LARGE 4" CYLINDERS** equal longer seal life and lower operating pressures vs. smaller competitive cylinders.



**▲ ALL position 1" thick mechanical locks on BOTH carriages engage the full length of travel. Available with optional single point air lock release (requires air to lift).**

- To raise the carriages, Mohawk's LMF-12, TP-16 and TP-18 use direct drive lifting rods which eliminate the wear & maintenance associated with lifts that use cables, chains, & overhead cable covers.
- Mohawk carriages roll on eight double sealed, self-lubricating, steel ball bearing rollers, for a lifetime of maintenance-free operation.
- Mohawk bearings last longer, with less friction and wear than competitive lifts using plastic slide blocks which need constant greasing and maintenance.

**What other lift offers a 25 year structural warranty?**

**2 POST ACCESSORIES**



**Safety Weight Gauge**  
to determine vehicle weight, aid vehicle diagnosis & show lift is lowered onto locks.

**Speedlane Adaptor**  
Slips on quickly for instant lifting without positioning swing arms yet leaves the wheels hanging free for tire and brake work.

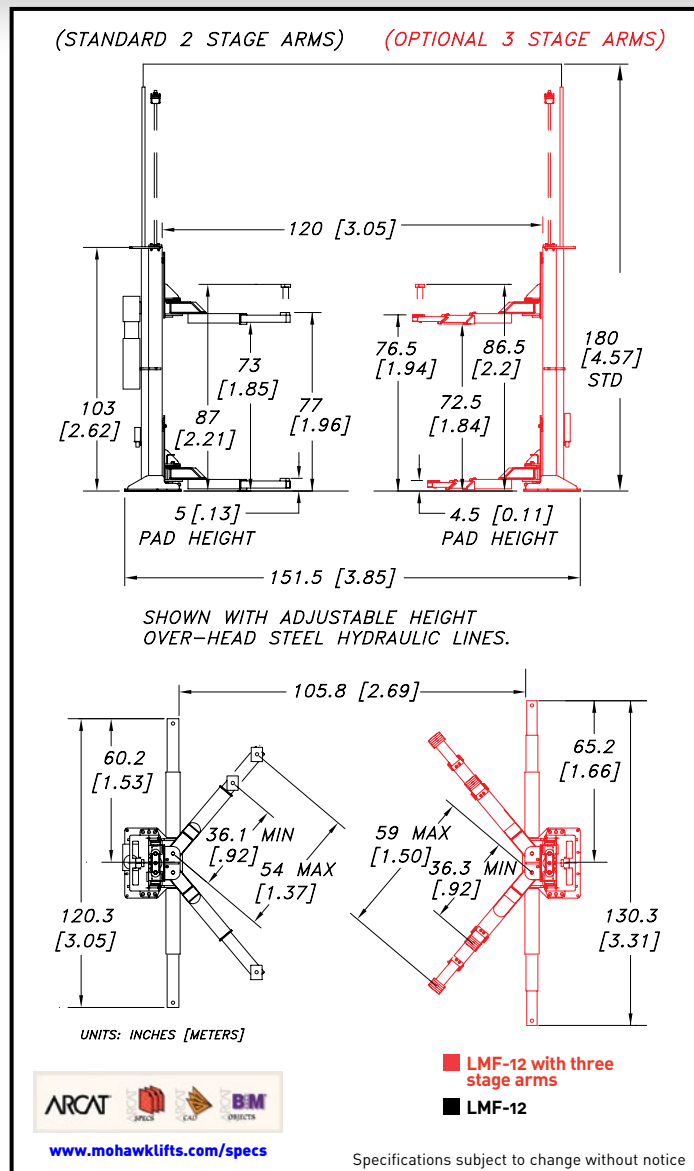
Winner of Motor Magazine's Top 20 Tools

**Bid Term: 11/16/18 - 11/15/20**



# MODELS LMF-12, TP-16 & TP-18 SPECIFICATIONS

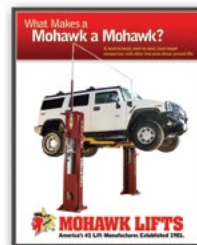
<b>Model:</b> .....	<b>LMF-12, TP-16 &amp; TP-18</b>
<b>Capacity:</b> .....	LMF-12: 12,000 lbs. (5443.11 Kg) TP-16: 16,000 lbs. (7257.49 Kg) TP-18: 18,000 lbs. (8164.66 Kg)
<b>Lifting Speed:</b> .....	60 seconds (faster with lighter load)
<b>Motor Rating:</b> .....	4 HP/208-230V, Single-phase (3ø optional)
<b>Synchronization:</b> .....	Hydraulic fluid displacement using no chains, cables, or overhead obstructions
<b>Arm Pad Height:</b> .....	5" (12.7 cm) min.
<b>Lifting Height:</b> .....	6' (1.83 m) under arm
<b>Arm Pad Height @ Full Rise:</b> .....	6'5" (1.96 m)
<b>Max. Arm Pad Height with Adaptors:</b> .....	7'3" (2.21 m)
<b>Overall Width:</b> .....	12' 7½" (3.85 m) (adjustable)
<b>Width Between Posts:</b> .....	10' (3.05 m) (adjustable)
<b>Width Between Lifting Arms:</b> .....	8' 9¾" (2.69 m) (adjustable)
<b>Column Height:</b> .....	8' 7" (2.62 m)
<b>Max. Cylinder Height:</b> .....	13'6" (4.11 m)
<b>Overhead Hydraulic Line Height:</b> .....	15' (4.57 m) Standard (adjustable to accommodate any height ceiling or routed in-floor)
<b>Weight:</b> .....	LMF-12: 3100 lbs. (1406.13 Kg) TP-16: 3600 lbs. (1632.96 Kg) TP-18: 3900 lbs. (1769.01 Kg)
<b>Concrete Floor Requirements:</b> .....	4000 psi (27579.02 kPa) mix 6½" (16.51 cm) depth
<b>Anchoring System: Included</b> .....	(16) ¾"x6" (1.91x15.24 cm) bolts
<b>Mechanical Safety Locks:</b> .....	<b>Automatic;</b> multi-position starting @ 5" (12.7 cm) off the floor
<b>Hydraulic Safety Systems:</b> .....	<b>Automatic;</b> all position
<b>Swing Arm Restraints:</b> .....	<b>Automatic</b> upon ascent
<b>Cylinders:</b> .....	2 (1 per column)
<b>Drive System:</b> .....	Direct drive (using no cables or chains)
<b>5" Frame Adaptors (stackable):</b> .....	4 included as standard equipment
<b>7½" Frame Adaptors (stackable):</b> .....	4 included as standard equipment
<b>10" Frame Adaptors (stackable):</b> .....	4 included as standard equipment
<b>Steel Carriage Bearings:</b> .....	(16) 4" (10.16 cm) diameter (8 per carriage) double sealed, self-lubricating ball bearing rollers
<b>Floor Access Between Posts:</b> .....	Clear and unobstructed
<b>Warranty:</b> .....	<b>25 years structural, 10 year mechanical, plus limited lifetime cylinder seal warranty</b>



Mohawk builds the best products with the finest materials, to the highest standards. Just compare our lifts. Our staff will assist you with a fleet evaluation, design assistance and answer any technical questions you have. We invite your calls.

Mohawk lifts are manufactured in compliance with the following standards: ALI, ANSI, ASME, AISI, ASTM, ASA, NEC, AWG, NEMA.

MEETS CURRENT NATIONAL ANSI CODE FOR LIFTS.



**For more detailed product information read this book at**  
[www.mohawklifts.com/wmamam](http://www.mohawklifts.com/wmamam)



[www.facebook.com/mohawklifts](http://www.facebook.com/mohawklifts)



AVAILABLE UNDER DISCOUNTED GOVERNMENT CONTRACT IN ALL 50 STATES

**Mohawk Resources, LTD.**  
 P.O. Box 110  
 65 Vrooman Ave  
 Amsterdam, NY 12010  
 (800) 833-2006  
 (518) 842-1431  
 FAX: (518) 842-1289



GSA contract #GS-07F-207AA



[www.mohawklifts.com](http://www.mohawklifts.com)  
 NJ State Approved Co-op #65MCECCPS

**DISTRIBUTED BY:**